

11/2 Multiply Fractions - Reteach

$$12 \times \frac{1}{3} = 4$$

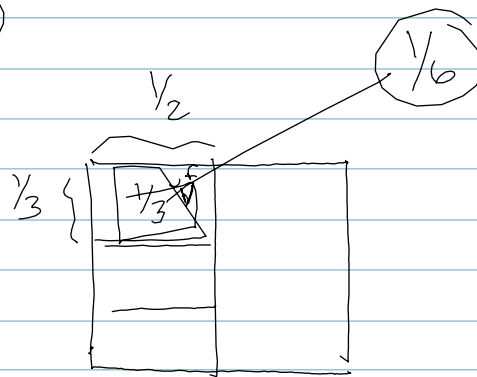
$$12 \div \frac{1}{3} = 36$$

NOT

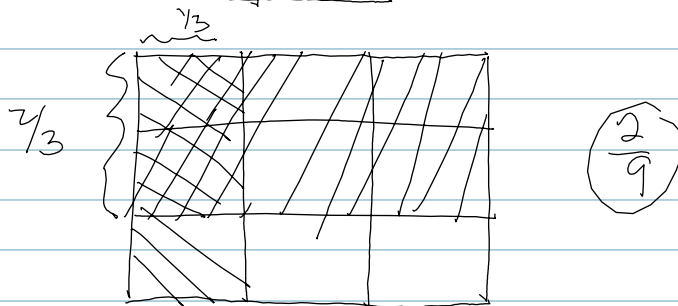
$$\frac{12}{1} \times \frac{1}{3} = \frac{12}{3} = 4$$

$$\frac{12}{1} \times \frac{1}{3} = \frac{4}{1} = 4$$

$$\frac{1}{2} \text{ of } \frac{1}{3} = \frac{1}{6}$$



$$\frac{2}{3} \text{ of } \frac{1}{3} = \frac{2}{9}$$



Cross-Cancel

$$\frac{4}{8} \times \frac{16}{4} = \frac{2}{1} = 2$$

* looking for common factors diagonally.

$$\frac{7}{9} \times \frac{81}{63} = \frac{9}{9} = 1$$

$$1\frac{1}{2} * \frac{3}{2} =$$

$$\frac{3}{2} * \frac{3}{2} = \frac{9}{4} = 2\frac{1}{4}$$

$$\frac{5}{6} * 15 =$$

$$\frac{5}{6} * \frac{15}{1} = \frac{25}{2} = 12\frac{1}{2}$$

Retake: FOR multiply fractions $11/2$

$$\textcircled{A} \frac{4}{5} * 1\frac{1}{2} =$$

$$\frac{4}{5} * \frac{3}{2} = \frac{4}{5} = 1\frac{1}{5}$$

$$\textcircled{B} 4\frac{1}{8} * 1\frac{3}{4} =$$

$$\frac{33}{8} * \frac{7}{4} = \frac{231}{32} = 7\frac{7}{32}$$

$$\begin{array}{r} 2 \\ 33 \\ \times 7 \\ \hline 231 \end{array}$$

$$\begin{array}{r} 7 \\ 32 \overline{) 231} \\ \underline{224} \end{array}$$

$$\textcircled{C} 15 * \frac{7}{8} =$$

$$\frac{15}{1} * \frac{7}{8} = \frac{105}{8} = 13\frac{1}{8}$$

$$\begin{array}{r} 1 \quad 1 \\ 32 \quad 32 \\ \times 8 \quad \times 7 \\ \hline 256 \quad 224 \end{array}$$