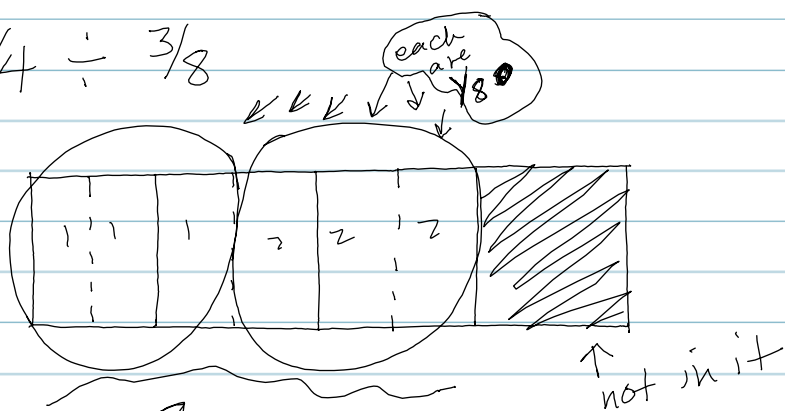


# Friday - Dividing with Fractions

$$\frac{3}{4} \div \frac{3}{8}$$

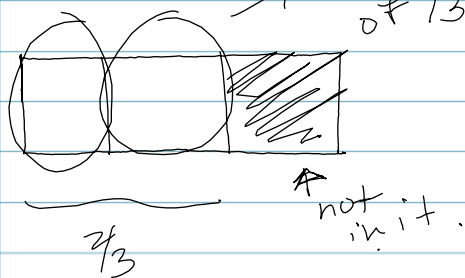


$$\frac{3}{4} \div \frac{3}{8} = \frac{24}{12} = 2$$

$$\frac{3}{4} \times \frac{8}{3} = \frac{24}{12} = 2$$

$$\frac{2}{3} \div 2$$

→ 2 equal groups of  $\frac{1}{3}$



two ways to think of this

1) \* Its  $\frac{1}{2}$  of  $\frac{2}{3}$

\* Its divided into 2 equal parts...

2) Its how much of a "2 whole" portion is  $\frac{2}{3}$ ?

Its  $\frac{1}{3}$  of 2

OR

$$\frac{2}{3} \div 2$$

$$\frac{2}{3} \cdot \frac{1}{2} = \frac{2}{6} = \frac{1}{3}$$

