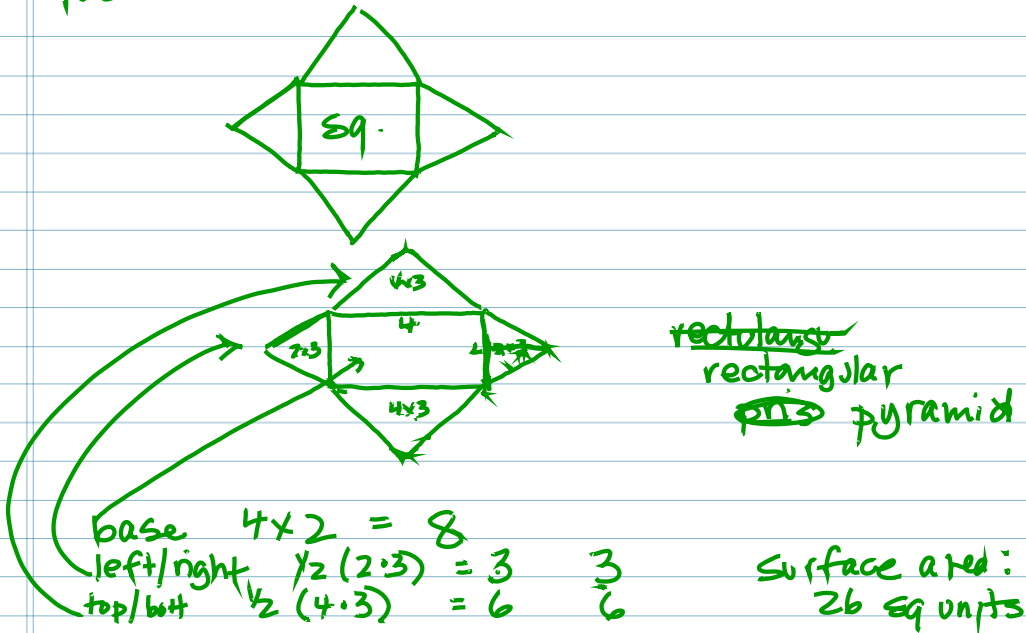


3/7

p. 781

Surface Area of pyramids

Nets



p 782

① 65 cm^2

p 783

HW p. 787-788 (1-9)

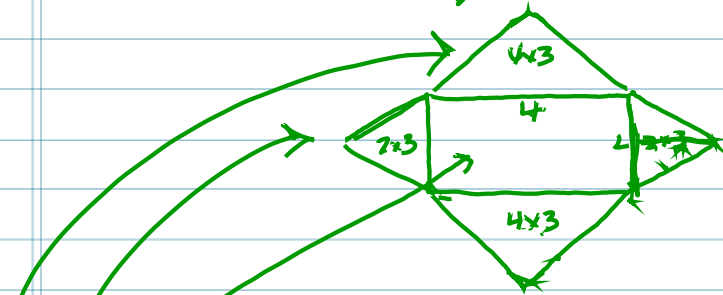
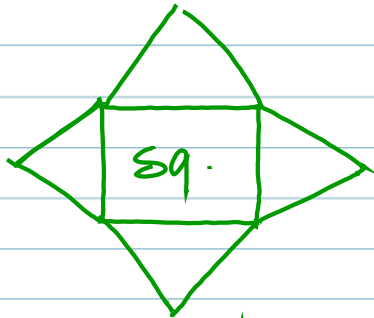
① base 4 sq m
lateral face $5 \text{ sq m} \times 4$
SA = 24 sq. meters

3/7

p. 781

Surface Area of pyramids

Nets



~~rectolans~~
 rectangular
~~prism~~ pyramid

base $4 \times 2 = 8$
 left/right $\frac{1}{2} (2 \cdot 3) = 3$ 3
 top/bottom $\frac{1}{2} (4 \cdot 3) = 6$ 6

Surface area:
 26 sq units

p 782

① 65 cm^2

p 783

HW p. 787-788 (1-9)

① base 4 sq m
 lateral face $5 \text{ sq m} \times 4$
 SA = 24 sq. meters