

1/25 Ch 8.4

(pp 603-610)

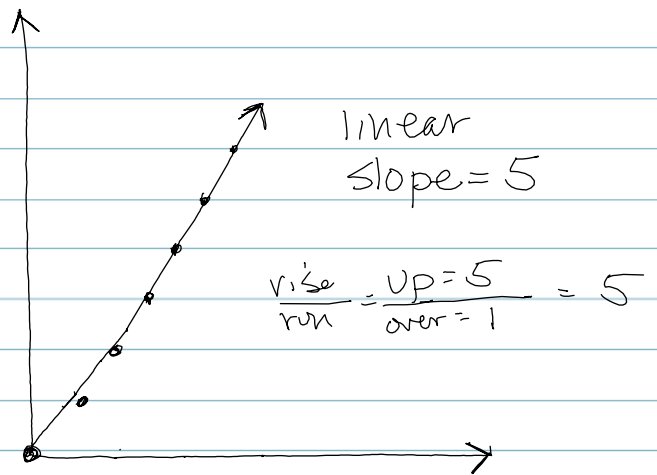
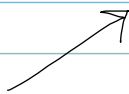
X	Y
+1(1)	9
+1(2)	18
+1(3)	27
4	36
5	45
7	63

$$y = 9x$$

§. 604 Example #1

$$t_p = 5p$$

(pies) X	Y (total \$)
0	0
1	5
2	10
3	15
4	20
5	25



#2

$$b = 14m$$

("m" min.) X	Y (total "B")
0	0
1	14
2	28
3	42
4	56
5	70

p. 604

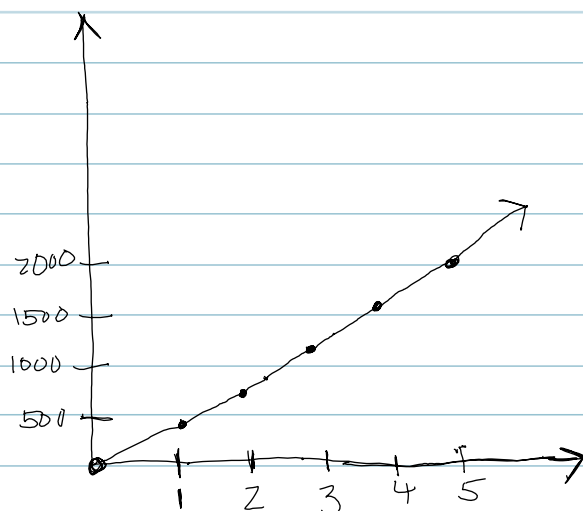
a) $d = 8h$

b) $c = 36h$

p. 607-608 (HW) 1-7

① $v = 400d$

d	v
1	400
2	800
3	1200
4	1600
5	2000



②a

$$\begin{aligned} 2f + 49.90 &= 64.50 \\ -49.90 &= -49.90 \end{aligned}$$

$$\frac{2f}{2} = \frac{14.60}{2}$$

$$f = 7.30$$

②b

mystery on-line
fee per
ticket is \$7.30

②c) $3f + (24.95 * 3) = NO$

$$3(7.30) + (3 * 24.95) = X$$

\$96.75

$$3(7.30 + 24.95) = \underline{96.75}$$